



The extraordinary healing power of platelets.

Platelets are small, sticky cells in the blood that control bleeding and are vitally important when treating burn patients, chemotherapy patients, organ transplant recipients and victims of trauma.

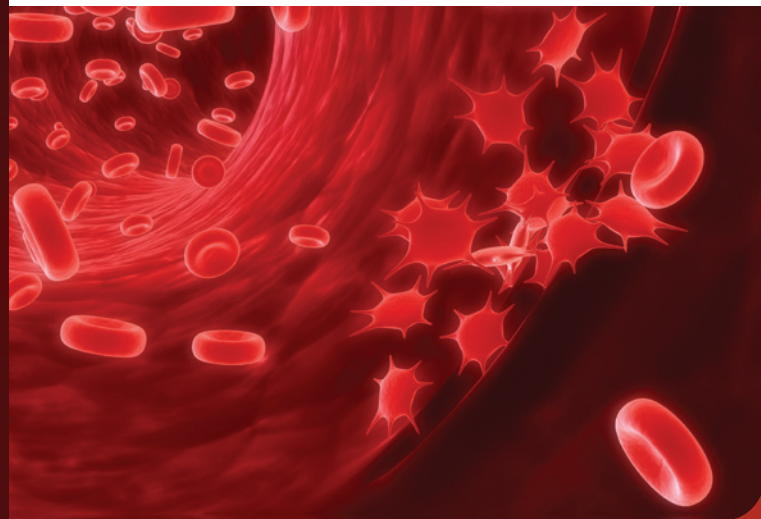
Each time you donate blood, Lifeblood separates your donation into its components, which include red cells, plasma and platelets. However, when you donate platelets through a process called apheresis (A-fer-E-sis), the red cells and the plasma are returned back to you.

It takes six to eight whole blood donations to provide as many platelets as one apheresis donor provides in a single donation. And while whole blood donors can donate only once every 56 days, platelet donors can donate as frequently as every two weeks with no loss in clotting ability, as our bodies typically replace platelets with 24 hours.

With a shelf life of only 5 days and used on patients of all ages, platelets must be collected constantly.

PLATELETS

a special GIFT





WHY DO YOU NEED ME TO DONATE PLATELETS?

Platelets have a shelf life of only five days, and Lifeblood distributes over 200 units of apheresis platelets each week to local hospitals and cancer clinics.

DON'T YOU ALREADY GET PLATELETS FROM MY WHOLE BLOOD DONATION?

Yes, but it takes 6 or more whole blood donations to equal one unit of apheresis platelets.

WILL I BE EXPOSED TO OTHER PEOPLE'S BLOOD IF I DONATE ON A MACHINE?

No. The kit is single use and totally contained, so no fluids actually come in contact with the machine. After each donor completes a donation the tubing, needle and collection materials are disposed of.

I'M NOT SURE I HAVE TIME.

The length of the time to donate depends on your weight and height. Most donors think of it as time to relax and enjoy a movie, surf the web or read a book.

DOES LIFEblood USE TWO ARMS FOR PLATELET DONATION?

Our procedure uses one arm, and allows the donor a free hand to read or surf the web while donating. Also, donors who may not have a good vein in both arms are still able to donate platelets if they choose.

DOES IT HURT MORE THAN A REGULAR DONATION?

It doesn't hurt at all. A smaller needle than a whole blood donation is used for apheresis donations. If you have questions we encourage you to talk with our staff and observe a platelet procedure first-hand.



How to make your special donation.

Learn how to become an apheresis donor and fill out an online appointment application at www.lifeblood.org. Or you can call 1.888.LIFEBLOOD to make an appointment at a nearby Lifeblood donor center.

1.888.LIFEBLOOD
WWW.LIFEBLOOD.ORG
1040 Madison Avenue
Memphis, TN 38104-2198

