

SAVE TIME, SAVE LIVES.

Lifeblood has the ability to collect two units of red blood cells in just one visit to our blood center. This donation, called Double Reds, means you can reduce the number of times you donate and provide the same level of service to our community.



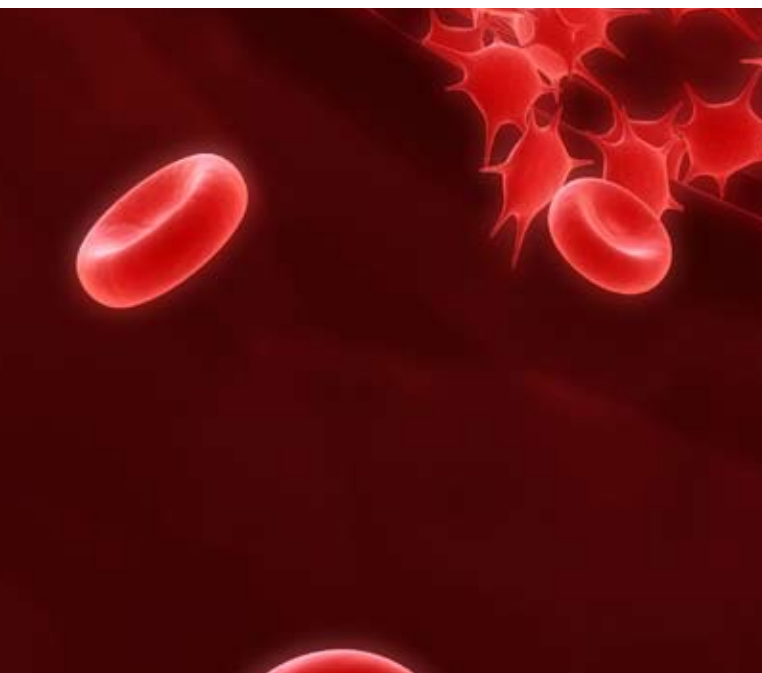
Double *your donation with* Double Reds

How does this process work?

Donating Double Reds is pretty similar to a standard blood donation session with a few important differences. The first is that we use a smaller needle, which makes the experience a bit more comfortable. The other is that we utilize an automated blood collection procedure. This process, called apheresis, draws your blood into a centrifuge, or spinning bowl, that separates the red blood cells from the platelets and plasma. As the red blood cells are collected, the platelets and plasma are returned back to you along with an infusion of saline, which makes you even better hydrated than before the donation.

Apheresis is a very common procedure and has been around for over 20 years. The entire process only takes about 20-30 minutes longer than a standard donation.

1.888.LIFEBLOOD | WWW.LIFEBLOOD.ORG



Why donate double reds?

Thanks to medical advances, most patients receive blood components in its separate parts rather than as whole blood. Therefore patients receive only what they need, and each donation of blood can be used to help as many patients as possible.

Automated blood donation procedures enable you to donate specific blood components to help patients in need of transfusion.

What are the components of blood? And why are red blood cells so necessary?

Thanks to medical advances, most patients receive blood components in its separate parts rather than as whole blood. Therefore patients receive only what they need, and each donation of blood can be used to help as many patients as possible.

Automated blood donation procedures enable you to donate specific blood components to help patients in need of transfusion.

What are the requirements for donors?

Along with meeting the regular blood donor qualification, double red cell donors must meet specific requirements:

- Donors must be at least 17 years old (or 16 with parental consent) and in generally good health.
- Males must be taller than 5'1" and weigh at least 130 lbs.
- Females must be taller than 5'5" and weigh at least 150 lbs.
- You are eligible to donate double reds every 112 days (16 weeks).



About Lifeblood

Since 1963, Lifeblood has served our hospitals and supplied almost all of the blood needed. The blood we collect stays in our community to help our fellow citizens. Lifeblood's only priority: helping save lives by providing the highest quality blood products and services to patients in our area.

We are open 24 hours a day, seven days a week to process and supply more than 90% of the blood used by area hospitals and other medical centers. We have donor centers located throughout the community, mobile units and nearly 200 employees to serve our donors.

Donor Centers

MEDICAL CENTER

Paul W. Barret, Jr. Center
1045 Madison Ave.
901.522.9198

BARTLETT

7505 Highway 64, Suite 109
901.384.9898

COLLIERVILLE

875 West Poplar, Suite 18
901.850.9291

EAST MEMPHIS

4934 Poplar Ave.
901.767.8585

GERMANTOWN

2095 Exeter, #75
901.756.8585

1.888.LIFEBLOOD

WWW.LIFEBLOOD.ORG
1040 Madison Avenue
Memphis, TN 38104-2198

TIPTON COUNTY

826 A Highway 51 N.
901.476.5501

UNIVERSITY OF MEMPHIS

Rawlins Service
Court Building
Suite 201
901.678.5722

BLYTHEVILLE, AR

320 North 6th
870.763.8585

DESOTO COUNTY, MS

577 Goodman Road, #5
662.349.0662

